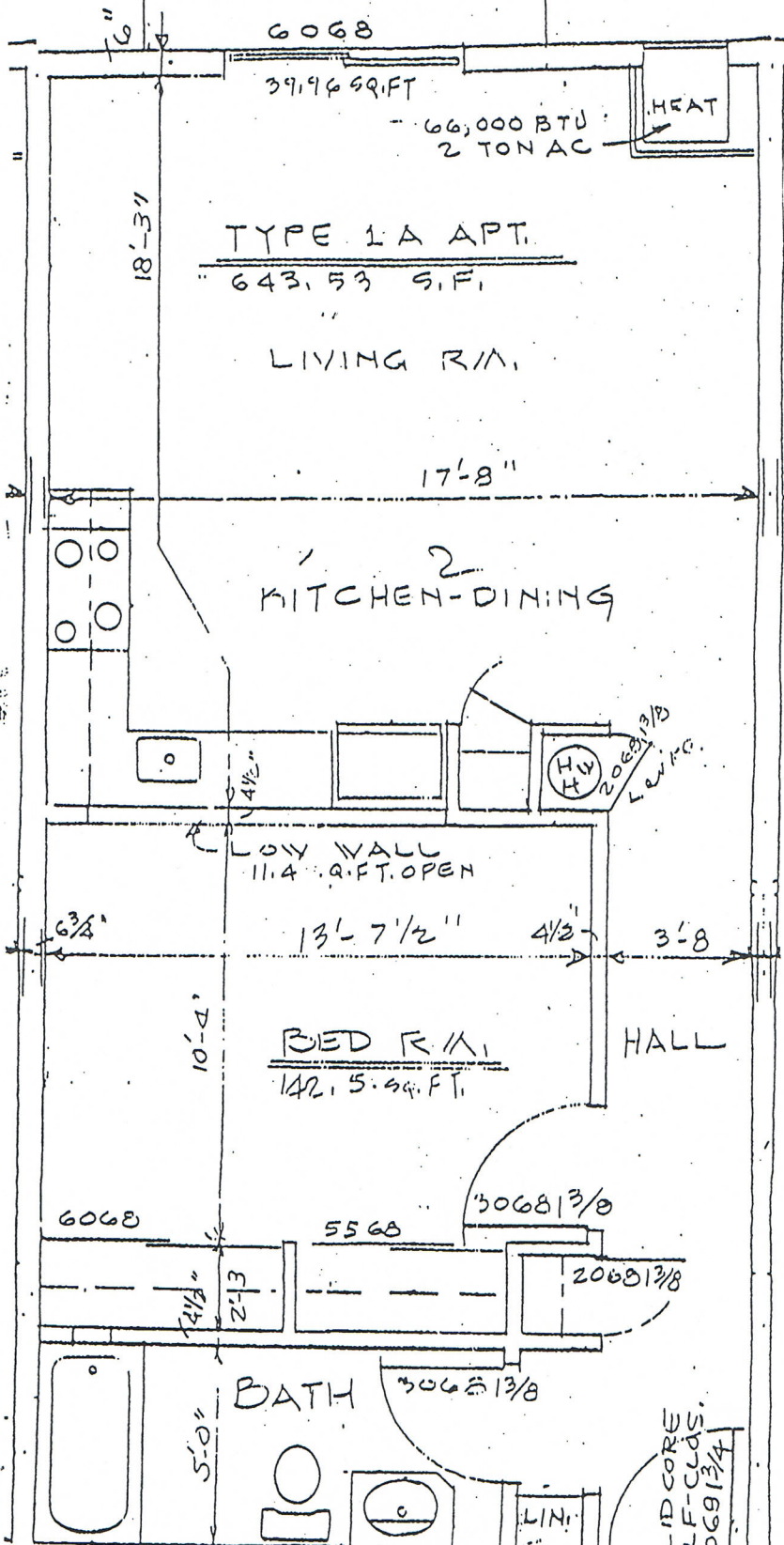


CONC. PATIO  
= 10'-0" X 5'-0"



6068

39196 SQ.FT

66,000 BTU  
2 TON AC

HEAT

TYPE 1A APT.

643.53 S.F.

LIVING R/M.

18'-3"

17'-8"

<sup>2</sup>  
KITCHEN-DINING

H  
W  
H  
206813/8  
LOW WALL

LOW WALL  
11.4 SQ.FT. OPEN

13'-7 1/2"

HALL

BED R/M.

142.5 SQ.FT.

10'-4"

6068

5568

306813/8

206813/8

BATH

306813/8

5'-0"

ID CORE  
LF-CLDS.  
06913/4